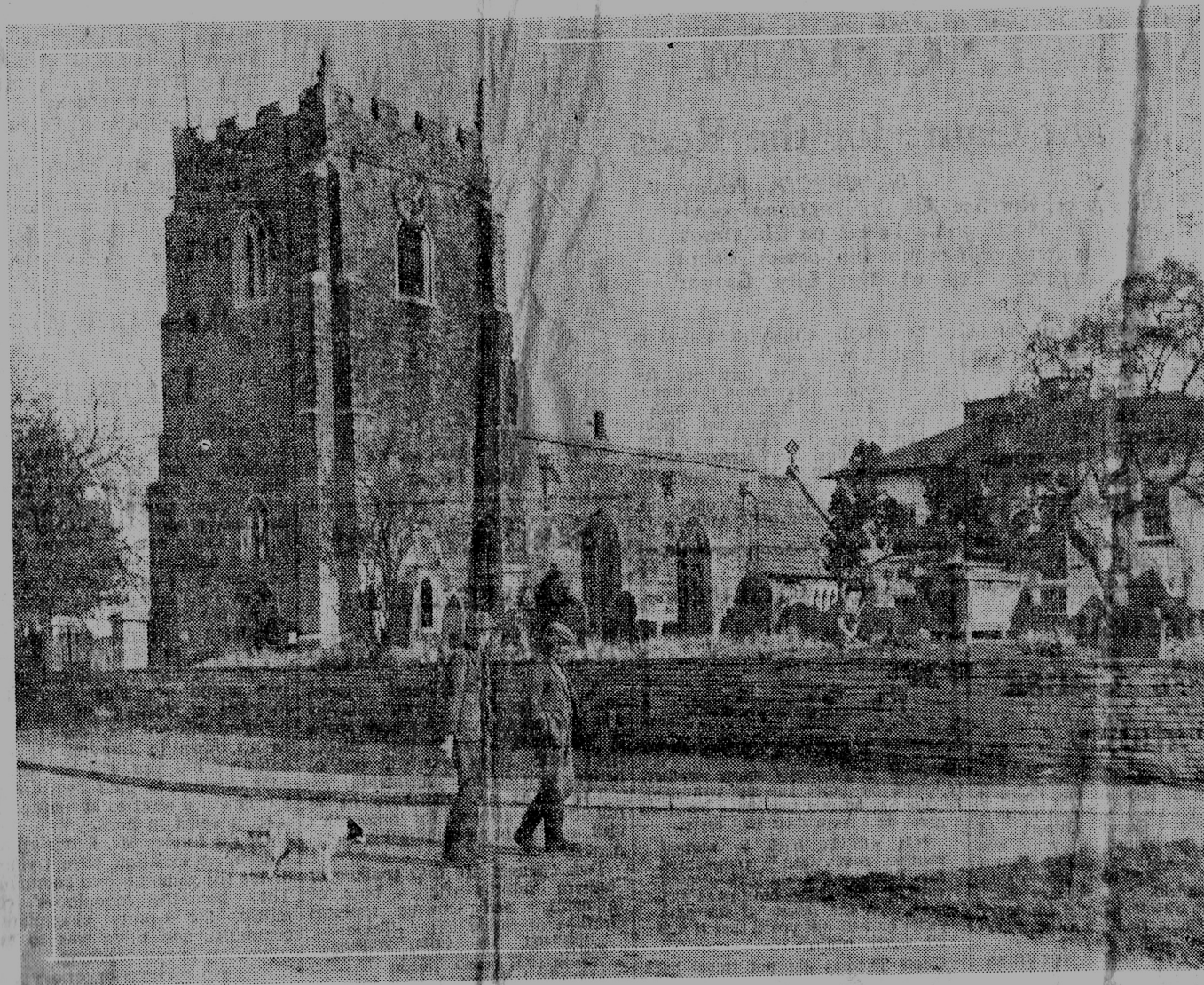


Five-minute Problem Picture



HERE ARE A FEW CLUES

- ★ Dedicated to St. Mary and All Saints, this church will be found about 13 miles east of Nottingham.
- ★ It is situated between Car Dike and Back Dike, which both flow into the River Devon.
- ★ Sibthorpe's famous dovecot, over 700 years old, is less than two miles away north.
- ★ Birds of prey are "worth" looking at to give you the clue you are after.
- ★ This church was rebuilt in 1851, with the exception of its tower.
- ★ Villages in the neighbourhood are: Screveton, Shelton, Flawborough and Thoroton.

★ ★ ★ ★

If you know the two figures in the picture, Mr. J. O. Spence and son Jeffrey, of Yew Tree Farm, one of the oldest buildings in the village, then you have no need to look for the answer, elsewhere on this page.

Where is this Nottinghamshire Village Church?

A rare and most welcome sunny Sunday in February found us scouting round the countryside in search of a weekly Five-minute Problem Picture, and it was not long after entering the Vale of Belvoir that we came across a little village church containing reminders from far-off Norman days. Built into the base of its uncommon solid brick tower may be found an elaborate carved stone tympanum, while inside you will come across a stone lintel, carved in the fashion of a plait. Before leaving the churchyard, glance up at the south nave, where you will see a trio of wicked-looking lead gargoyles, writes G.G.S